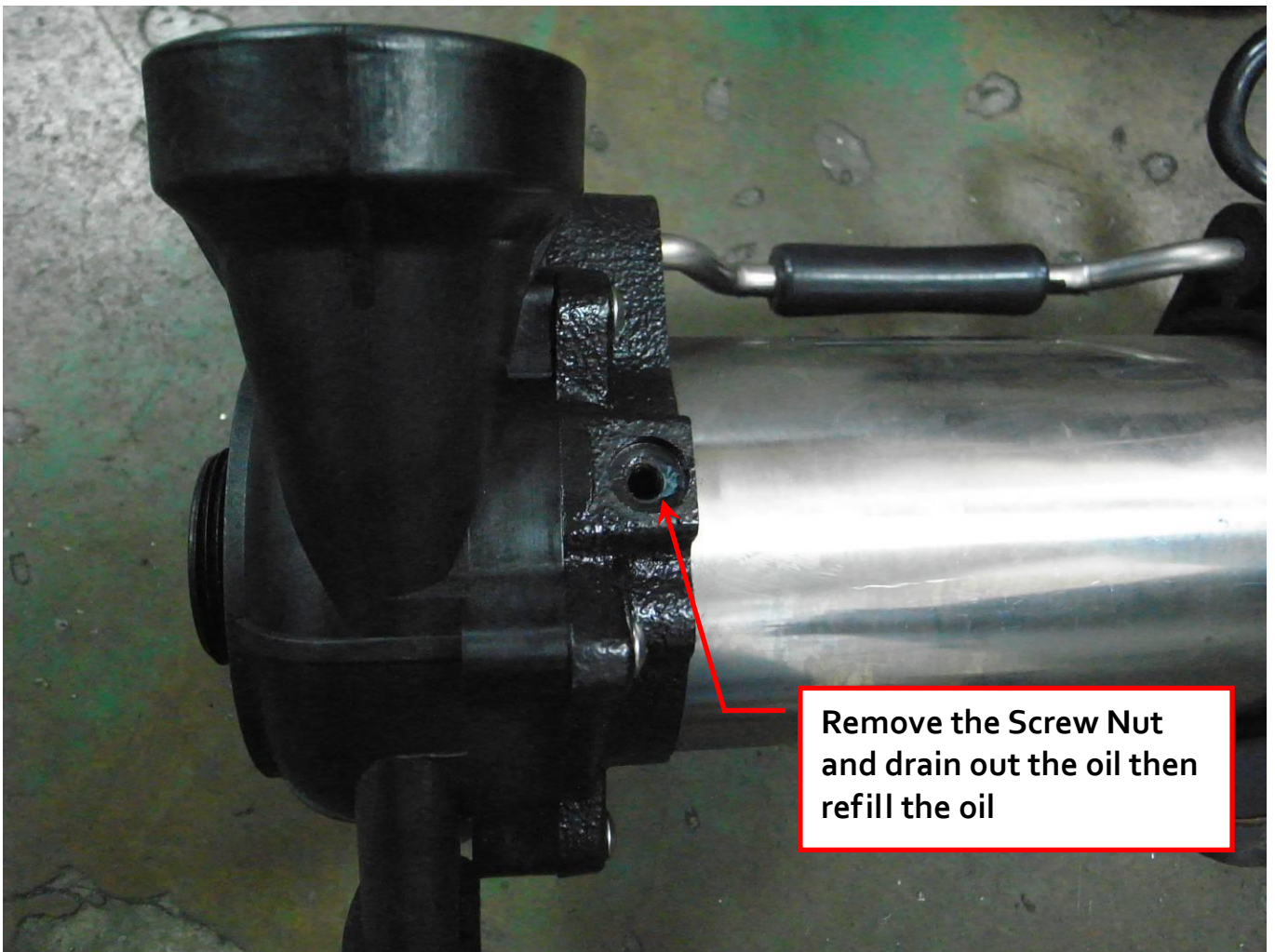


Plug for Oil Chamber



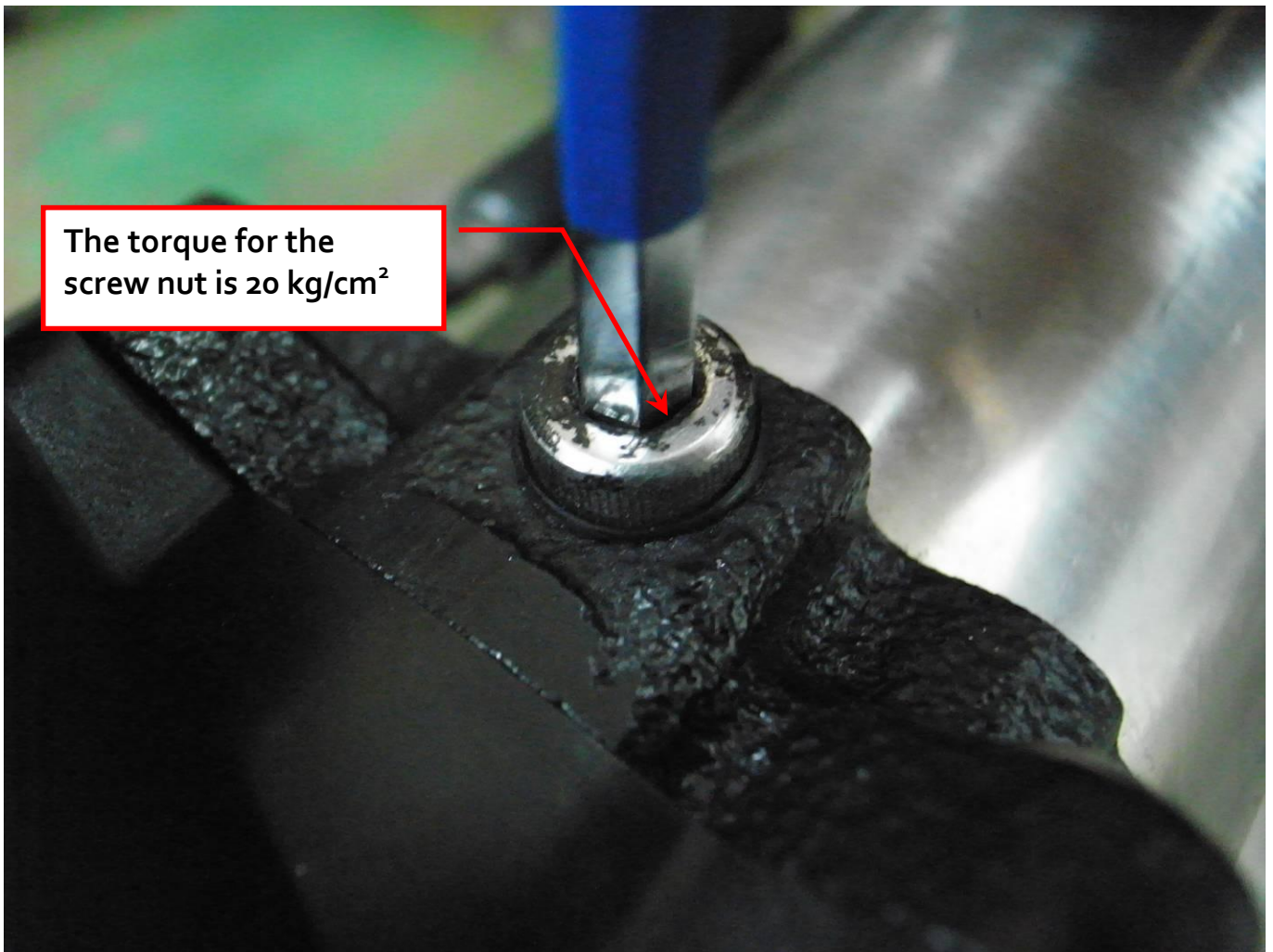
**Remove the Screw Nut
and drain out the oil then
refill the oil**

Make sure to add the gasket before screw the nut



Screw the nut back to the oil plug





The torque for the screw nut is 20 kg/cm²

Remark:

- Please drain out the waste oil completely before refill the new oil.
- In order to ensure the gasket has be installed properly and working good, Please do not over screw the screw nut.
- Reference Oil Spec. (EPGEAR HE HD-20)

Grade No.		HD20
Gravity, API, 15.6°C		31.0
Viscosity, Kin., cSt	@40°C	46
	@100°C	6.74
Viscosity Index		99
Pour Point, °C		-6
Flash Point, COC, °C		218
Color, D1500		2.0
Oil Volume for 1/5 & 1/3 HP		25 cc
Oil Volume for 1/2 & 1HP		50 cc